

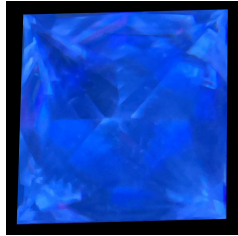
# CERTIFICATE OF DIAMOND ORIGIN

OPTICAL & SPECTROSCOPIC DATA

FLUORESCENCE



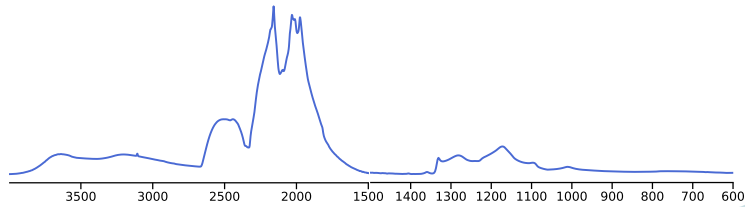
365 nm



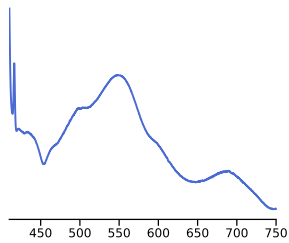
255 nm

For explanations of data, visit [deltadiamondlab.com](http://deltadiamondlab.com)

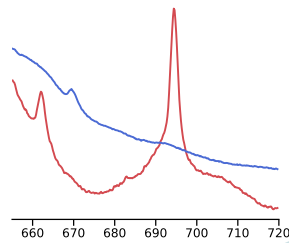
INFRA-RED



VISIBLE



LUMINESCENCE



Weight **0.72 carats**

Colour **Pink**

Shape **Radiant**

Width **4.79 × 4.78 mm**

Depth **3.67 mm**

Inscription **-**

Remarks **GIA report 6165630048**



The diamond represented in this report has natural colour and characteristics that are considered to be unique to or consistent with diamonds from the ARGYLE deposit on account of:

- UV fluorescence
- Mid Infra-red (FTIR) spectrum
- Photo-luminescence (PL) spectrum
- Visual absorption spectrum
- Photochromic behaviour



Verify online at [reports.deltadiamondlab.com/5105044](http://reports.deltadiamondlab.com/5105044)

*John Chapman*

JOHN CHAPMAN — Analyst  
07<sup>th</sup> December 2023

